

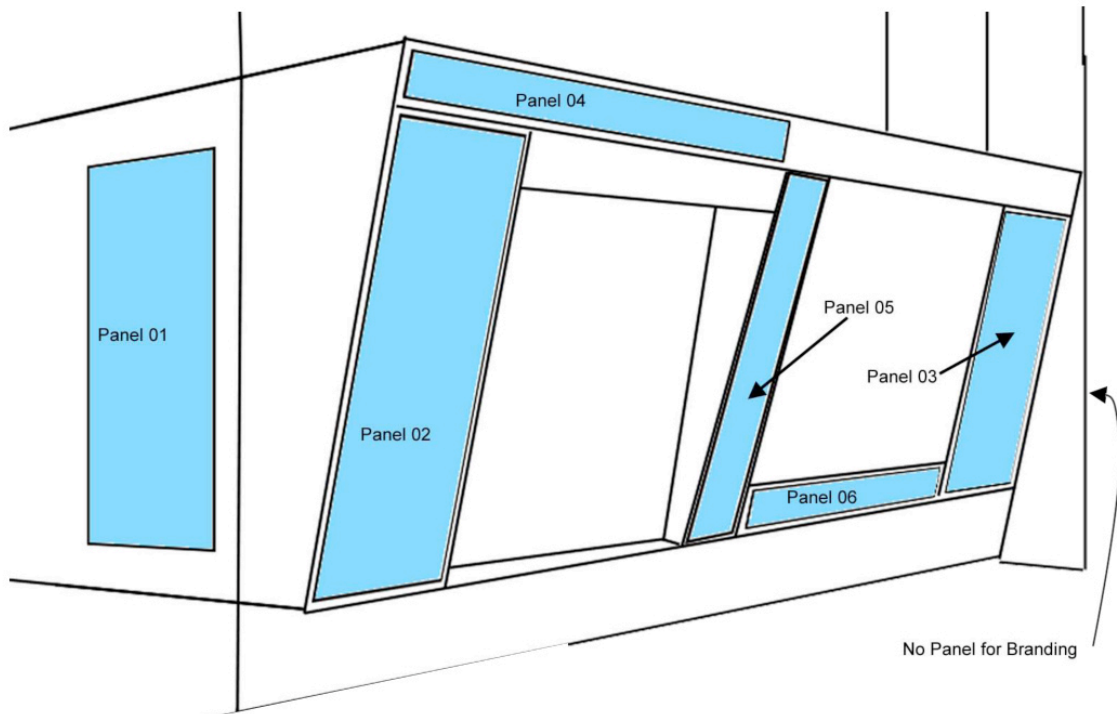
PAYSTATION TYPE E - CTIA
ENCLOSED - DOUBLE BUILT-IN UNIT
2 UNITS



Panel Size:

Panel 01: 1240mm x 510mm
 Panel 02: 1245mm x 455mm
 Panel 03: 1245mm x 455mm
 Panel 04: 195mm x 1475mm
 Panel 05: 1245mm x 155mm
 Panel 06: 210mm x 1050mm

Print for 2 Units



Repro Specifications:

Scans must be full colour CMYK, approx A3 at 300dpi not less than 180mb.

File Formats : Adobe Photoshop - ver3, 4, 5.5, CS3, Freehand - 8, 9, 10, 11, MX, Adobe Illustrator - 8, Corel Draw - 13, Indesign - CS3.

Convert all type to paths. Cromalin/Iris proof for colour matching purposes. May use Pantone references for spot colours, CMYK % values are not acceptable, due to differences in pigment hues from printer to printer. Bleed background to material size.

NOTES: If a document contains any scanned or raster images, supply these as separate Photoshop "tif" or "eps" files. No links should be embedded on document. Ensure document is "CMYK" not "RGB". All test must be converted to curves. Bleed must be added all round in final made up document. If no bleed is added, the file must be supplied in a layered format. All artwork must be set up to a minimum of 10% of the final size. DPI of scans should be a minimum of 300dpi and 10% of final size